

J'ai demandé à la lune

INDOCHINE

DRUM SET

Musical staff for drum set, measures 1-8. The staff is in common time (C) and contains a series of horizontal lines representing drum hits.

Musical staff for drum set, measures 9-16. Measure 9 starts with a 7/8 time signature. The staff contains a series of horizontal lines representing drum hits.

Musical staff for drum set, measures 17-24. Measures 17-20 feature a complex rhythmic pattern with 'x' marks above notes. Measures 21-24 are marked with a 2/4 time signature and a double bar line.

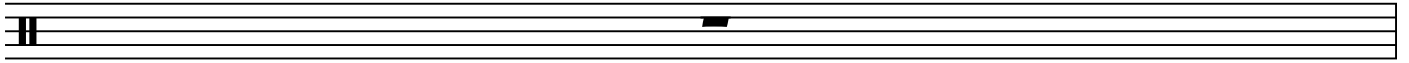
Musical staff for drum set, measures 25-32. Measures 25-30 feature a complex rhythmic pattern with 'x' marks above notes. Measures 31-32 are marked with a 2/4 time signature and a double bar line.

Musical staff for drum set, measures 33-40. Measures 33-36 feature a complex rhythmic pattern with 'x' marks above notes. Measures 37-40 are marked with a 2/4 time signature and a double bar line.

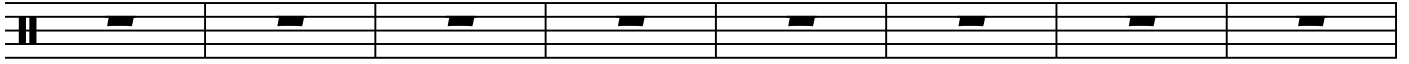
Musical staff for drum set, measures 41-48. Measures 41-46 feature a complex rhythmic pattern with 'x' marks above notes. Measure 47 is marked with a 2/4 time signature and a double bar line. Measure 48 is marked with a 2/4 time signature and a double bar line.

Musical staff for drum set, measures 49-56. Measures 49-52 feature a complex rhythmic pattern with 'x' marks above notes. Measures 53-56 are marked with a 2/4 time signature and a double bar line. A 'x3' multiplier is present above the final measure.

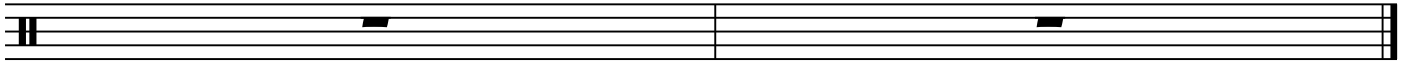
Musical staff for drum set, measures 57-64. Measures 57-60 feature a complex rhythmic pattern with 'x' marks above notes. Measures 61-64 are marked with a 2/4 time signature and a double bar line.



56



57



65